

SCA/SCB/STS/STL

PARKING GARAGE LUMINAIRES



PHILIPS



GARAGE LIGHTING



Garages are among the most challenging of lighting tasks. Vehicles and pedestrians move in confined spaces and in close proximity. Maintenance of facilities and lighting is further challenged by exhaust fumes and other dirt and pollutants. There is ever-present danger and exposure to acts of vandalism that can create threats to personal safety. Wasteful glare becomes a dangerous hazard. Bright light directed in the line of sight can be both discomforting and disabling, making it difficult to avoid obstacles and pedestrians and to interpret visual clues correctly.

The objectives of garage illumination are straightforward - clear visibility in the driving lane, freedom from disabling glare and a bright, safe pedestrian environment. However, adding the physical constraints imposed by low, coffered ceilings, low-reflective surfaces and inconsistent maintenance, the designer's choice of luminaire can become quite complicated.

Philips Gardco's Form Ten garage solutions are an extension of our outdoor principles - minimum brightness with maximum uniform light placed in desired areas. Glare control is of paramount importance. Unfortunately, garages limit the mounting height of luminaires, frequently placing them in the line of sight. Gardco's full cutoff optical systems eliminate glare, even at low mounting heights.

THE FORM TEN SOLUTION

To meet these challenges, Philips Gardco has engineered two luminaires that satisfy the prerequisites of illumination and durability. The 14" SCA and 19" SCB/STS/STL luminaires incorporate outstanding mechanical, electrical and photometric features that more than meet the special demands of parking structure lighting. Six full cutoff optical assemblies and a variety of mounting options accommodate the typical floorplans and ceiling configurations.

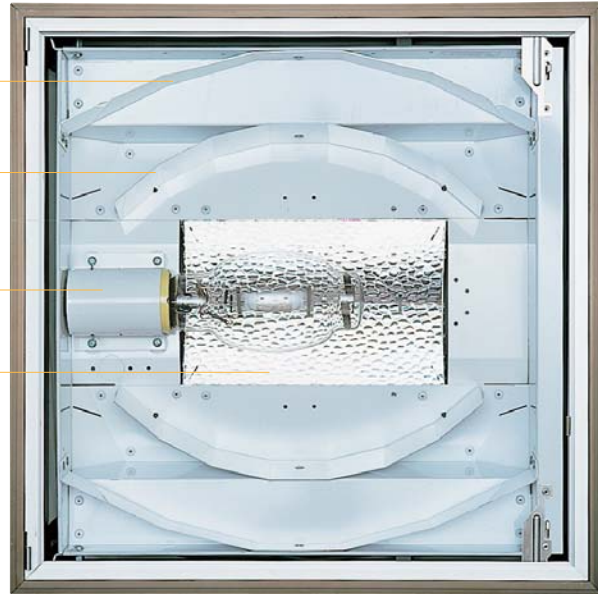
Design, quality of materials and craftsmanship combine to produce a luminaire that is easy to install and service and resists damage and the elements. The housing is extruded, anodized aluminum. Corners are precisely mitered and silicone gasketing throughout excludes moisture, dirt and insects.



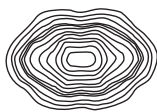
OPTICAL SYSTEMS

Philips Gardco SCA/SCB luminaires accept all HID lamp types and wattages up to 400 watts. Six sophisticated full cutoff optical assemblies provide glare control with uniform light distribution. The lamps and optical assemblies are in sealed housings that provide superior protection against dirt, pollution and breakage.

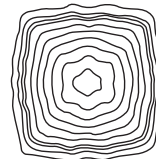
- Reflector facets are designed to achieve six distribution patterns.
- Two levels of mirror-polished reflector facets are precisely aligned to distribute light in predictable, uniform, glare-free patterns.
- The porcelain lampholder has a nickel-plated screwshell and spring-reinforced center contact for longer life.
- The configured upright recovery box directs lamp lumens out and away from the area directly below the luminaire, eliminating hot spots.



Philips Gardco luminaires outperform competitive products in controlling glare and economically providing illumination of garages with excellent uniformity, regardless of ceiling configuration. The complex optical assembly eliminates the hot spots, dark spots, streaks and striations generated by many other types of luminaires. Each optical system is designed to maximize the output of lamp lumens into desired areas. Light is precisely and predictably site-confined and glare at normal viewing angles is eliminated. Philips Gardco has developed its command of optics into a system of six distribution patterns. The precision of each distribution pattern is remarkable – no competitive system offers the designer as much versatility.



TYPE I (HORIZONTAL LAMP)
*SCB



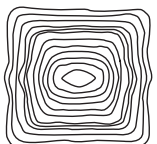
TYPE V VERTICAL SQUARE
(VERTICAL LAMP)



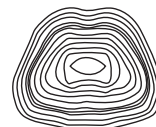
TYPE VI (VERTICAL LAMP)



TYPE FM FORWARD THROW
(HORIZONTAL LAMP)
*SCB



TYPE V (HORIZONTAL LAMP)
*SCB = Type Q



TYPE III (HORIZONTAL LAMP)
*SCB

SCA available in all optical systems SCB only available in optical systems denoted *

SCA SPECIFICATIONS

GENERAL: Each Gardco SCA style ceiling mounted unit is a rectilinear sharp cutoff luminaire for high intensity discharge lamps. The luminaire is totally enclosed, dust-tight, and weather and corrosion resistant.

HOUSING: The sides are composed of precisely mitered, anodized aluminum extrusions. The top pan is press-formed with a returned perimeter flange that interlocks with the housing sides. Pressure injected silicone provides a continuous weathertight seal at all miters and points of material transition.

DOOR/LENS ASSEMBLY: The anodized extruded aluminum door frame retains the optically clear, heat and impact-resistant tempered flat glass or convex thermoplastic lens in a sealed manner using hollow section, high compliance, memory retentive extruded silicone gasketing. The door assembly hinges to the housing with concealed stainless steel hinge pins.

OPTICAL SYSTEMS: The segmented optical system is homogeneous sheet aluminum, electro-chemically brightened, anodized and sealed. The segmented reflectors are set in faceted arc image duplicating patterns to achieve IES Types I (1), III (3), IV (FM), and V (Q, V1, VS) distributions.

ELECTRICAL: Each high power factor ballast is the separate component type, capable of providing reliable lamp starting down to -20° F/-29°C. The ballast is secured within the luminaire, adjacent to the reflector system. Component-to-component wiring within the luminaire will carry no more than 80% of rated current and is listed by UL for use at 600 VAC at 302°F/150°C or higher. Plug disconnects are listed by UL for use at 600 VAC, 15A or higher.

FINISH: Units are available with Architectural Class I anodized or electrostatically applied, thermally cured polyester TGIC powdercoat finish.

LABELS: All fixtures bear UL or CUL (where applicable) Damp Location labels.

WARRANTY: Philips Gardco luminaires feature a five year limited warranty. See Warranty Information on www.sitelighting.com for complete details and exclusions. Polycarbonate lenses carry a one year warranty only.

MOUNTING

SCA-J Style - Quick-Mount Box

Each SCA-J style luminaire is supplied with a 14 gauge galvanized steel junction box with integral slots permitting 90° rotation capability for luminaire alignment. This ceiling mounted steel box may attach directly to a 4" (10.16 cm) octagonal recessed outlet box (by others) or directly to the ceiling using 3/8" (.95 cm) studs (by others) through (4) 7/16" (1.11 cm) diameter holes provided. The box is provided with (4) knockouts for 1/2" (1.27 cm) and 3/4" (1.91 cm) surface conduit. A 16 gauge galvanized steel mounting bracket attaches to the luminaire top pan and provides hinging slots permitting servicing of unit in a captive manner. Four (4) tamper-proof mounting screws lock the luminaire to the box in a fixed position.

SCA-S & L Style - Trunnion-Mounted

All Gardco SCA-S and L style luminaires are designed to mount to a concrete ceiling with a dieformed, anodized aluminum trunnion bracket assembly. The trunnion assembly permits (6) one inch incremental mounting height adjustments. A 1/2" (1.27 cm) I.P.S. weatherproof diecast aluminum hub with an integral O-ring is located on the top pan for field attachment of rigid or flexible conduit (by others).

Trunnion Bracket Assembly: The upper and lower trunnions bolt together with 1/4-20 carriage bolts and provide vertical height adjustment. The upper trunnion has a central 17/32" (1.35 cm) diameter hole providing pivotal alignment and (2) 13/32" (1.03 cm) diameter outboard mounting holes insuring rigid ceiling attachment.

SCA-D Style - Flush-Mount

Each Gardco SCA-D style luminaire is designed to mount to a concrete ceiling (directly beneath recessed outlet box) with (4) 3/8" (.95 cm) mounting studs (by others). The 2 3/4" (6.99 cm) diameter access hole in the top pan is sealed with a gasketed cover plate providing external wire leads for supply connection.

SCA ORDERING

| Example | PREFIX | MOUNTING | DISTRIBUTION | WATTAGE | VOLTAGE | FINISH | OPTIONS |
|---------|--------------|----------|----------------------------------|-----------------|---|------------|---------------------------|
| | SCA14 | J | 1 | 175PSMH | 120 | BRA | F |
| | SCA14 | J | Horizontal Lamp Vertical Lamp | See Chart Below | 120 | BLA | F |
| | | D | 1 V1 | | 208 | BRA | SH |
| | | S | 3 VS | | 240 | NA | POLY ⁴ |
| | | L | FM | | 277 | BRP | QS ⁵ |
| | | | Q | | QUAD | BLP | QST ⁵ |
| | | | | | <i>120/208/240/277, Factory tied to 277V.</i> | NP | Q924 ⁵ |
| | | | | | | OC | QT924 ⁵ |
| | | | | | | SC | |

MOUNTING

- J** Quick Mount Box
- D** Direct to Ceiling
Not available w/FM optics or 200HPS, 200MH or 250MH lamp.
- S** Trunnion Mounting 12" - 18"
- L** Trunnion Mounting 18" - 24"

DISTRIBUTION

- | | |
|---------------------------------|--|
| Horizontal Lamp | Vertical Lamp |
| 1 Type I | V1 Type I |
| 3 Type III | VS Type V |
| FM Type IV Forward Throw | <i>Vertical lamp optics require medium base lamps and high temperature resisting thermoplastic sag lens (supplied standard).</i> |
| Q Type V | |
- Mogul Base is supplied standard, except for 100MH and 150MH.*

FINISH

- BLA** Black Anodized
- BRA** Bronze Anodized
- NA** Natural Aluminum Anodized
- BRP** Bronze Paint
- BLP** Black Paint
- NP** Natural Aluminum Paint
- OC** Optional Color Paint
Specify RAL designation, ex: OC-RAL7024.
- SC** Special Color Paint
Specify. Must supply color chip.

WATTAGE

| | Mogul Based Lamps ³ | | Medium Based Lamps | |
|---------------------------------------|--------------------------------|----------------------------|----------------------------|-----------------------------|
| Pulse Start MH Magnetic Ballast | 175PSMH [ⓔ] | 200MH [ⓔ] | 100MH | 175PSMH [ⓔ] |
| Standard MH Magnetic Ballast* | 175MH * | 250MH * | 175MH * | 200MH [ⓔ] |
| High Pressure Sodium Magnetic Ballast | 70HPS | 150HPS | 70HPS ¹ | 150HPS ¹ |
| | 100HPS | 200HPS ² | 100HPS ¹ | |

** 175MH and 250MH not available for sale in the United States.*

E Wattages marked with ⓔ in the chart on the left meet federal energy efficiency standards applicable to 150 watt through 500 watt metal halide luminaires only.

1. Vertical lamp optics only.
2. 200HPS and 250MH only available in horizontal lamp optics.
3. Mogul based lamps for horizontal optics only.

OPTIONS

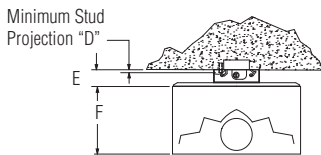
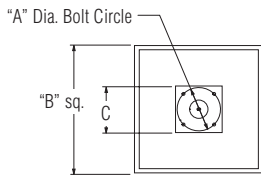
- F** Fusing
- SH** Spanner Head Access Screw
- POLY**⁴ Vandal Resistant Sag Polycarbonate Lens
- QS**⁵ Quartz Standby
- QST**⁵ Quartz Standby - Timed Delay
- Q924**⁵ Quartz Emergency
- QT924**⁵ Quartz Emergency - Timed Delay

Prior to ordering, consult Submittal Data Sheet on sitelighting.com for the most current information, notes and exclusions. Philips Gardco now also offers our complete catalogue on a web enabled and easy to carry flash drive. Contact your sales representative for information.

4. Polycarbonate lenses carry a 1 year warranty only.
5. 100W quartz lamp maximum.

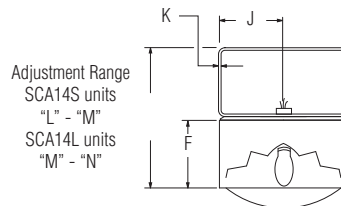
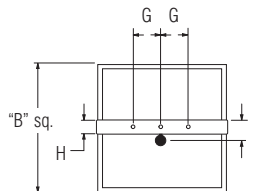
DIMENSIONS

SCA-J Style - Quick-Mount Box



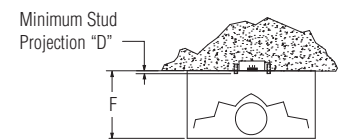
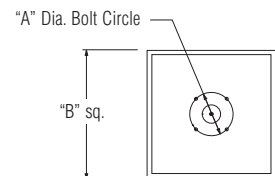
| Dimension | Inches | Centimeters |
|-----------|--------|-------------|
| A | 6.5 | 16.51 |
| B | 14.31 | 36.347 |
| C | 7 | 17.78 |
| D | 0.5 | 1.27 |
| E | 2 | 5.08 |

SCA-S & L Style - Trunnion-Mounted



| Dimension | Inches | Centimeters |
|-----------|--------|-------------|
| F | 7.25 | 18.415 |
| G | 4 | 10.16 |
| H | 1.5 | 3.81 |
| I | 1.75 | 4.445 |
| J | 7.34 | 18.644 |

SCA-D Style - Flush-Mount



| Dimension | Inches | Centimeters |
|-----------|--------|-------------|
| K | 0.19 | .4826 |
| L | 12 | 30.48 |
| M | 18 | 45.72 |
| N | 24 | 60.96 |

SCB / STS / STL SPECIFICATIONS

GENERAL: Each Gardco SCB/STL/STS luminaire is a full cutoff luminaire for high intensity discharge lamps. Units are designed with half cube proportions. Internal components are totally enclosed, dust tight and corrosion resistant. No venting of optical system or electrical components is required or permitted. Luminaires are completely assembled with no disassembly required for installation. Lamping requires no lifting or hinging the luminaire housing, disturbing wiring or exposing uninsulated live parts.

HOUSING: Sides are composed of precisely mitered, anodized aluminum extrusions. Top pans are press-formed with a returned perimeter flange that interlocks with housing sides. Pressure injected silicone provides a continuous weathertight seal at all miters and points of material transition.

LENS: Mitered, extruded anodized aluminum door frame retains the optically clear, heat and impact resistant tempered flat glass or sag thermoplastic in a sealed manner using hollow section, high compliance, memory retentive extruded silicone rubber. Concealed stainless steel latch and hinges permit easy toolless access to the luminaire.

OPTICAL SYSTEMS: The segmented Form Ten optical system is a homogeneous sheet aluminum, electrochemically brightened, anodized and sealed. The segmented reflectors are set in faceted

arc tube image duplicator patterns to achieve Types I (1), III (3), IV (FM), and V (Q) distributions. The mogul lampholder is glazed porcelain with a nickel plated screw shell with lamp grip – all securely attached to the reflector assembly.

ELECTRICAL: Each high power factor ballast is the separate component type, capable of providing reliable lamp starting down to -20° F/-29°C. The ballast is secured within the luminaire, adjacent to the reflector system. Component-to-component wiring within the luminaire will carry no more than 80% of rated current and is listed by UL for use at 600 VAC at 302°F/150°C or higher. Plug disconnects are listed by UL for use at 600 VAC, 15A or higher.

FINISH: Housings are standard with natural, bronze or black Aluminum Association Architectural Class I anodized finish applied after fabrication.

LABELS: All fixtures bear UL or CUL (where applicable) Wet Location labels.

WARRANTY: Philips Gardco luminaires feature a five year limited warranty. See Warranty Information on www.sitelighting.com for complete details and exclusions. Polycarbonate lenses carry a one year warranty only.

MOUNTING

SCB Style: Quick-Mount Box

Each SCB style luminaire is supplied with a 14 gauge galvanized steel junction box with integral slots to permit 90° rotation capability for luminaire alignment. This ceiling mounted steel box may attach directly to a 4" (10.16 cm) octagonal recessed outlet box (by others), but recommended mounting is directly to the ceiling using 3/8" (.95 cm) studs (by others) through (4) 7/16" (1.11 cm) diameter holes provided. Box is provided with (4) knockouts for 1/2" (1.27 cm) and 3/4" (1.91 cm) surface conduit. A 16 gauge galvanized steel mounting bracket attaches to the luminaire top pan and provides hinging slots that permit servicing of the unit. Four (4) tamper-proof mounting screws lock the luminaire to the box in a fixed position.

STS & STL Style: Trunnion-Mounted

All Gardco STS and STL style luminaires are designed to mount to concrete ceiling with a die formed anodized aluminum trunnion bracket assembly. Trunnion assembly permits six (6) one inch (2.54 cm) incremental mounting height adjustments. A 1/2" (1.27 cm) I.P.S. weatherproof diecast aluminum hub with integral O-ring is located on the top pan for field attachment of rigid or flexible conduit (by others).

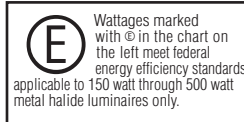
Trunnion Bracket Assembly: Upper and lower trunnions fasten together with 1/4"-20 carriage bolts and provide vertical height adjustment. Upper trunnion has a central 17/32" (1.35 cm) diameter hole providing pivotal alignment and two (2) 13/32" (1.03 cm) diameter outboard mounting holes insuring rigid ceiling attachment.

SCB / STS / STL ORDERING

| Example | PREFIX | DISTRIBUTION | WATTAGE | VOLTAGE | FINISH | OPTIONS |
|---------|----------------|----------------------|---------------------------------|---|------------|--------------------------|
| | SCBEH19 | 1 | 250PSMH | 120 | BRA | F |
| | SCBEH19 | Direct Mount Box | <i>Horizontal Lamp</i> | <i>See Chart Below</i> | 120 | F |
| | STSEH19 | Short Trunnion Mount | 1 Type I | 208 | BRA | VR |
| | STLEH19 | Long Trunnion Mount | 3 Type III | 240 | NA | QS¹ |
| | | | FM Type IV Forward Throw | 277 | OC | QST¹ |
| | | | Q Type V | QUAD | SC | Q924¹ |
| | | | | <small>120/208/240/277, Factory tied to 277V.</small> | | QT924¹ |

WATTAGE

| | | |
|--|----------------------------------|----------------------------------|
| Pulse Start MH Magnetic Ballast | 250PSMH $\text{\textcircled{E}}$ | 350PSMH $\text{\textcircled{E}}$ |
| | 320PSMH $\text{\textcircled{E}}$ | 400PSMH $\text{\textcircled{E}}$ |
| Standard MH Magnetic Ballast* | 250MH* | 400MH* |
| High Pressure Sodium Magnetic Ballast | 200HPS | 400HPS |
| | 250HPS | |
| * 250MH and 400MH not available for sale in the United States. | | |



FINISH

| | |
|------------|---|
| BLA | Black Anodized |
| BRA | Bronze Anodized |
| NA | Natural Aluminum Anodized |
| OC | Optional Color Paint <i>Specify RAL designation, ex: OC-RAL7024.</i> |
| SC | Special Color Paint <i>Specify. Must supply color chip.</i> |

OPTIONS

| | |
|--------------------------|--|
| F | Fusing |
| VR | Vandal Resistant Door Assembly <i>Includes Poly Lens.</i> |
| QS¹ | Quartz Standby |
| QST¹ | Quartz Standby - Timed Delay |
| Q924¹ | Quartz Emergency |
| QT924¹ | Quartz Emergency - Timed Delay |

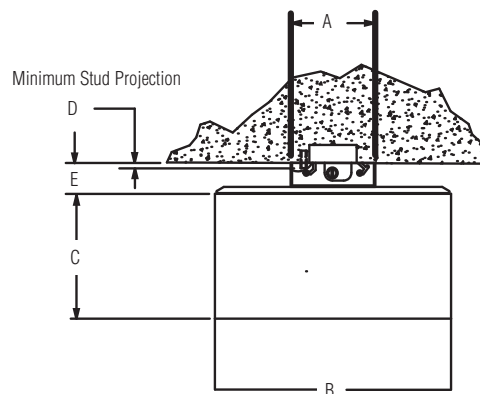
1. 100W quartz lamp maximum.

Prior to ordering, consult Submittal Data Sheet on sitelighting.com for the most current information, notes and exclusions. Phillips Gardco now also offers our complete catalogue on a web enabled and easy to carry flash drive. Contact your sales representative for information.

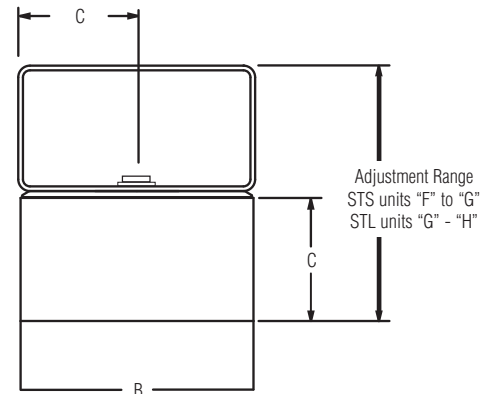
DIMENSIONS

| Dimension | Inches | Centimeters |
|-----------|--------|-------------|
| A | 7 | 17.78 |
| B | 19 | 48.26 |
| C | 10 | 25.4 |
| D | 0.5 | 1.27 |
| E | 2 | 5.08 |
| F | 15 | 38.1 |
| G | 21 | 53.34 |
| H | 27 | 68.58 |

SCB Style: Quick-Mount Box



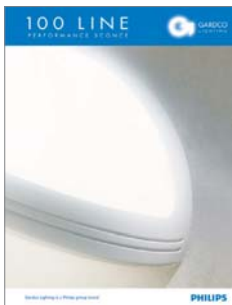
STS & STL Style: Trunnion-Mounted



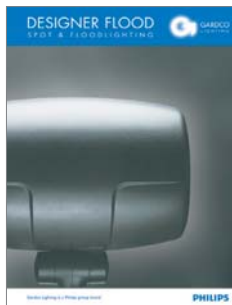
Form Ten Round



Gardco Sconce



Floodlight



Step and Aisle Lights



Philips Gardco Warranty

Philips Gardco luminaires feature a five year limited warranty. For full warranty information please visit sitelighting.com.

1611 Clovis Barker Road
San Marcos, TX 78666
512/753-1000
800/227-0758
Fax: 512/753-7855
www.sitelighting.com

